

Souvenir Magazine

of



**We open at 12 noon on
Tuesday 1st September
at
123 Eastern Avenue, Southend**

No. 5

SEPTEMBER, 1981

Vol. 8

FOR CENTRAL HEATING & PLUMBING CONSULT THE EXPERTS !

HEAT DESIGN (Southend) LTD

636 SOUTHCHURCH ROAD, SOUTHEND-ON-SEA, ESSEX

(CORGI REGISTERED)

APPROVED INSTALLERS & CONTRACTORS FOR BRITISH GAS

Specialists in low-cost fully automatic heating systems
Boiler exchanges, new bathroom suites, showers, etc.

FOR EXPERT ADVICE, FREE SURVEY & ESTIMATE

Phone: SOUTHEND (0702) 613161

TWO-YEAR GUARANTEE : SPECIAL DISCOUNT FOR ACCESS EMPLOYEES

R. & S. SOUTH

Registered Builder

Building and Decorating Services
and Contractors

- ★ CARPENTRY
- ★ WALL TILING
- ★ PLASTERING
- ★ PATIO DOORS
- ★ BRICKWORK
- ★ PLUMBING
- ★ EXTENSIONS & CONVERSIONS
- ★ INTERIOR & EXTERIOR PAINTING
AND DECORATING
- ★ FITTED KITCHENS & BATHROOMS
- ★ ALL BUILDING WORK UNDERTAKEN
- ★ DOUBLE GLAZING



Shoebury 5476

BELL SPORTS

(Prop: P. H. QUYY)

Stockists of
ALL LEADING
MAKES of
**SPORTS
WEAR**
and
EQUIPMENT

Open lunch hour
and to 5.30 p.m.
and ALL DAY
Wednesday

**Discount to
Access members**



120 PRINCE AVENUE, SOUTHEND
Telephone: SOUTHEND 47558

AccessSports&SocialClub

Matter intended for publication should reach the Editor by the 4th of the current month at the Social Club Office. Advertisement copy and communications regarding it and business matters should be addressed to the Social Club Secretary at **ACCESS, 200 Priory Crescent, Southend-on-Sea (352211, Ext. 286)**. Watch the Club notice board in the main rest room for notices regarding the forthcoming Social Club activities.

ACCESS SPORTS & SOCIAL CLUB GENERAL COMMITTEE — 1981

G. Oakley (Chairman), C. Buchanan (Vice-Chairman), S. J. Curtis (Secretary), Mrs. L. C. Hey (Treasurer), T. Clayton, Miss S. Livermore, Miss S. Mowle, J. Waskett, Mrs. L. Matthews, Mrs. L. Croysdill, Miss A. Pearson, C. Goodall.

If you have any suggestions or queries regarding your club, contact either the Club office (ext. 286) or any Committee member.

HONORARY LIFE MEMBERS

J. H. JONES H. G. CAMERON J. P. BROWNE C. BUCHANAN B. GRIGGS G. A. GILHESPY

Diary of Events

- SEPTEMBER** Tuesday 1st: CLUBHOUSE OPEN
Saturday 5th: CALAIS/HYPERMARKET TRIP. £12.50; £8 children
Saturday 12th: BROADLANDS/WINCHESTER (Ladies' Guild)
Saturday 19th: BARNUM at the Palladium. £9.25 including coach
Saturday 19th: NEWBURY PARK RACES
Friday 25th: BARNUM (Palladium. £9.25 (no meal)
Weekend 25th/27th: WEIZE BEER FESTIVAL; waiting list running
- OCTOBER** Saturday 3rd: JOHNNY MATHIS (Dominion) — sold out
Thursday 8th: HORSE OF THE YEAR SHOW
Sunday 11th to Wednesday 14th: GOLF HOLIDAY — BLAIRGOWRIE,
(Scotland) — sold out
Saturday 24th: THE SOUND OF MUSIC (Apollo)
Saturday 31st: THE SOUND OF MUSIC (Apollo)

● BOOKINGS ONLY TAKEN WITH A DEPOSIT

For further details of any of these events contact the Social Club Office, Building 1, Ext. 286. A deposit secures your place.

FOR ALL YOUR
JEWELLERY REQUIREMENTS
AT DISCOUNT PRICES

Large selection of

RINGS

Diamond, Engagement,
Eternity, Wedding, Signet
and Dress Rings at

DISCOUNT PRICES

Hundreds to choose from

We carry probably the
largest stocks of

**Gold and Silver
JEWELLERY**

In South East Essex
with some carrying
UP TO 50% DISCOUNT

We sell

WATCHES

by Longines, Seiko,
Accurist, Rotary, Tissot,
Eterna, Avia, Sekonda,
Timex, Ingersoll, etc.

Hundreds to choose from

Large selection of

CHAINS

Neck, Ankle and Wrist
Chains, Charms,
St. Christophers and
Pendants, Ear-rings,
Bangles, etc., etc.

Hundreds to choose from

DISCOUNTS

of up to 25%

or more

**TO ALL MEMBERS OF
ACCESS SPORTS AND
SOCIAL CLUB**

GIFTS

FOR ALL OCCASIONS

Tankards, Cufflinks,
Barometers, Lighters,
Cutlery, Silver Plate
etc., etc.

Hundreds to choose from

**CASH PAID !
WE PURCHASE GOLD
and SILVER JEWELLERY**

In stock: large range of
**SECONDHAND
JEWELLERY**

Jewellery also part-
exchanged

REPAIRS
carried out on premises

VALUATIONS
for insurance (same day)

Hand or Machine
ENGRAVING

RINGS RESIZED
same day

EAR PIERCING

No appointment required

PAINLESS & HYGIENIC
by specialist

Choice of Surgical or
9-ct. Ball Studs, Ear-rings
or Sleepers

For the **VERY BEST** in JEWELLERY and personal service call at

ANDREW'S & COMPANY

DISCOUNT JEWELLERS, MANUFACTURING JEWELLERS, GOLDSMITHS

101 Southchurch Road, Southend-on-Sea, Essex Tel: Southend 65006

Open Daily 9 a.m. to 6 p.m. (Wednesdays 5 p.m.) Open lunchtime (opposite Co-op Store)

Around the Sections

SAILING CLUB

On Friday, July 17th, at the Civic Centre Access Sailing Club members received from the Mayor, Coun. Mrs. Moira Myers, the Sanders Cup for first dayboat in the Southend Yachting Week.

The winning boat was Chaos, crewed by Les Harrison (Fraud Investigation) and Betty Bye (Customer Services) who are having a most successful racing season.

NoSOCS (Non-Social Society)

I know it's September now but I'm writing this on my hols. while basking in the unbroken sunshine and searing heat of the small little-known resort of Stewcflif where I had flown by luxury jet of Kamikaze Airways.

What a superb aircraft — supersonic, brand new, every possible modern comfort, no expense spared in fitting it out.

As it stood on the runway, surrounded by admiring crowds, I caught sight of dark greeny J. Fish-Frighton gazing at it intently.

"Thinking of buying it?" I joked.

"No. Selling it," was the straight-faced (what else?) reply. He must be raising funds to buy another stamp. . . .

NoSocs outing — July 29th. Well, I thought my choice of a tour of St. Paul's was a good idea. I never realised it would be so crowded — loads of tourists, cameras everywhere, not to mention some sort of fancy dress party going on with carnival floats gumming up the streets. Shouldn't be allowed! In fact I'm writing to the Queen about it. Bet her family wouldn't have liked it.

Anyway, our sail-away day round Gibraltar in August made up for it. Had the boat to ourselves except for an off-duty sailor and his blonde, and we didn't see much of them either. They must have been feeling a bit seasick, I suppose.

What's new? The clubhouse, of course, cunningly situated so that only the privileged heirarchy who can put their cars on site will be able to get comfortably there and back in their lunch hour (or two).

Formation of an Access Plebs Jogging

Club can therefore be only a matter of time — but they'd probably spill most of their drinks anyway and more besides if they'd had a helping of Heave's pudding in the staff restaurant first.

It won't worry greeny Bert Banality — he'll still be down the Ekco Club being served a Guinness by Tina.

What else?

Who replaces Raj Randi Bhor? At the time of writing we are rumoured to be having perhaps a dose of slichmilk, a touch-up of waripreener or taking a trite pellet. Who knows? Deff F. Jelli reckons he does, as usual.

The W.V.S. department is getting more crowded — or is it just that Sh—— is taking up more room — more, even, than Allan H. Dinglem's thighs?

And why no cake for my 30p on Jem E. Heatrash's birthday in July!

Finally thanks to Veg Stinke for the telephone call (hope Miranda Wortog approved).

Wonder why I've never mentioned Milo J. Handl? Must have been worrying about limp-wristed R. the Priest.

Ho-hum, back to the sun (front to the sun later).

DAME VERA PUNJEDI

Co-Respondent's Page: letter just received

Members of the NoSocs Horticultural Society are pleased that their correspondent's letter finally reached Dame Vera Punjedi.

They would be grateful if I would pass on the following tip to Sandie Neat: The soil supporting the tall botanical specimen would be greatly improved in texture and richness if the by-product manure from the dairy system were regularly added to the sand and cement mixture!

TRANSPORT SOCIETY

With the resumption of daily opening it became possible for a Society visit to be made to the Southend Historic Aircraft Museum, a local attraction we had never before visited as a group.

Through the good offices of the curator, Mr. W. Gent, who is also Chairman of the

Guys & Dolls

UNISEX SALON

OFFERING EXPERTISE IN CUTTING AND BLOW DRYING

WE CARE about OUR reputation

WE CARE about YOUR hair

TEN PER CENT DISCOUNT TO
SOCIAL CLUB MEMBERS

For appointment telephone

Southend 42856

NOW OPEN SIX DAYS A WEEK LATE FRIDAY UNTIL 7.0

9 EARLS HALL PARADE, CUCKOO CORNER, SOUTHEND nr. Access House

We are now

Redken

appointed

FOR ALL REDKEN
TREATMENTS, PERMS
AND CONDITIONERS

Southend Sports Centre Limited

Managing Director: DON RODGERS

LARGE SELECTION OF TROPHIES,
TRACKSUITS, HOLDALLS and all
other Sports Requirements

Friendly and Personal Service

Discount to Access Members

633-639 SOUTHCHURCH ROAD, SOUTHEND-ON-SEA

Telephone: Southend 67688

Manager: Fred Webb

KEDDIES, HIGH STREET, SOUTHEND-ON-SEA

Telephone: Southend 62426, Ext. 204

Manageress: Mrs. M. Heath

Trophy Dept: 607 SOUTHCHURCH ROAD, SOUTHEND

Telephone Southend 615200

STOCKISTS
OF ALL
MAJOR
MAKES
OF
SUMMER
SPORTSWEAR

FOR
CRICKET
GOLF
TENNIS
SWIMMING

etc.

Southend Historic Aircraft Society, arrangements were made for us to make an out-of-hours visit during the evening of Tuesday, July 21st. Some thirty people, comprising members and friends, made up our party and we were welcomed by Bill Gent when we arrived at six o'clock.

The entire museum was open to us and we were free to wander round at leisure to see the many aircraft on display and read the details about each in comfort — something which is not granted visitors generally — and we were able, therefore, to inspect the enormous Blackburn Beverley while some of the younger and more agile members also sat in the cockpit of the Meteor.

An added attraction at the time of our visit was an exhibition arranged by Lesney's of their well-known plastic aircraft kits. This, however, dealt only with the manufacture of the kits and some people thought it would have been better if a selection of made-up models from the kits had been included.

Most of us were at the museum for over two hours and as we left thanks were extended to Mr. Gent for his helpful co-operation which made the visit possible.

The till in the museum shop was heard ringing away merrily, indicating that a number of the visitors were purchasing postcards, posters, badges and other items.

This museum is quite unique and a great asset to the area; it is quite discouraging that it possibly has more visitors from people from outside this area than from the immediate neighbourhood. The visit by our members and their friends may cause them to talk about it to others and even go again themselves.

Our first meeting of the winter session takes place on Tuesday, September 15th, and this will for the first time be held in the new clubhouse in Eastern Avenue, starting at 5.30 p.m.

As befitting an important occasion such as this we have arranged a special evening. Our much-travelled senior member Peter Paddison recently went on a day trip to Egypt (yes, it is possible to get to Cairo and back in a day and see some of the sights as well — if you go by Concorde) and he is going to tell us about this trip and also a visit he made to the west coast of Canada.

This will, of course, be very much an aircraft evening again, but we know Peter

will include other forms of transport where he can.

Those who attended Peter's last talk in January on the Harlingen Aircraft Collection will know he will provide a very entertaining evening. A warm welcome is extended to all members of the staff to come and have an interesting time with us in the clubhouse — two days before the official opening, too!

We normally finish just after seven o'clock, but there may be the attractions now to go on a little longer!

A few of our members were at Southend Airport on Saturday, July 25th, enjoying B.A.F.s open day and taking a short flight in one of their Heralds.

This was really a great opportunity and the flights went along the coast to Foulness, across to the Kent Coast, up-river to Tilbury and back to Southend over Basildon, Rayleigh and Rochford.

The weather was clear and sunny and by flying low some wonderful views were enjoyed and some good photographs taken. At £6 this was a bargain.

All this article so far seems to have been about aircraft, so it is time we looked at something else — railways, for instance.

Dates of the September steam days at Chappel and Wakes Colne and Castle Heddingham were given in our notes last month, but further steam days will be held by both the Stour Valley Railway Preservation Society at Chappel and Wakes Colne and the Colne Valley Railway Preservation Society at Castle Heddingham on Sunday, October 4th. Both sites will be open from 11 a.m. until 5.30 p.m. with steam rides available.

For the Colne Valley Railway this will be the last steam day of the year although there will be another at Chappel on Sunday, November 1st.

Something now for the bus enthusiasts. London Country will be holding an open day at their Harlow garage on Saturday, September 26th, when there will be the opportunity of seeing behind the scenes at a busy garage. This type of facility is growing and can only be of benefit to both the operator and the public.

Finally readers may be interested to know of two events taking place locally in October, full details of which will be given in next month's notes.

Firstly Southend Corporation is staging a large model railway exhibition at the

**SUPREME
TRAVEL
for
Worldwide
Travel
Service
in
HADLEIGH**

YOUR LEISURE IS OUR PLEASURE

Supreme

A GOOD NAME IN TRAVEL

Introducing SUPREME



HIRE A SUPREME LUXURY COACH . . .

Special information for group organisers. Why not hire a Supreme coach for your group? We have 29- to 53-seaters including our executive coaches which have reclined seats, tables, carpets, curtains, radio, stereo cassette and public address systems. **COACH TRAVEL IS OUR BUSINESS** for your holidays, theatre trips, race meetings, day excursions, etc. **ANY TIME, ANYWHERE** at home or abroad. For quotation without obligation: **SOUTHEND 557261**

THEN TRAVEL SUPREME — AND SIT BACK AND ENJOY IT !

Cliffs Pavilion, Westcliff, throughout Saturday and Sunday, October 17th and 18th.

This is something quite new for this district and the exhibition will be based on that successfully held at Gravesend each May for the past few years.

The following week, on Sunday, October 25th, there will be another open day at the Castle Point Transport Museum on Canvey Island when the principal attraction will be buses and sales stands — a mini Southend bus rally, if you like!

Further information about any of the above events may be obtained from the Society Secretary, Ray Palmer, of Midland Collections and Security at Essex House (ext. 4337).

Meanwhile, do come along to our meeting on September 15th and help give our winter session a good start.

R. M. PALMER

HORTICULTURAL SOCIETY

September is a busy month for the gardener, but if you do have a spare day may I recommend a visit to Wisley Gardens.

Held in trust by the Royal Horticultural Society. Wisley is known worldwide for its magnificent garden, trial grounds and horticultural research centre. The range of different plants and their settings means there is something of interest for everyone.

An extremely well stocked information centre, plant sales area, picnic area, licensed self-service cafeteria and a free car park are all adjacent to the garden. Care has also been taken to provide wheel-chairs and hard-path routes for disabled visitors.

Free tickets for up to four people are available from the secretary, Judith Fulcher (ext. 281).

The gardens are twenty miles from central London on the A3 between Chobham and Ripley in Surrey. They may also be reached by Green Line coach No. 715 or by rail from Waterloo to Esher and then by Green Line coach.

BASIL SAGE

RIFLE CLUB

It gives me great pleasure (among other things) to report that one of our number, Barry Hinchcliffe, has gained second place in his class in the Eley final at Bisley.

This is an annual competition sponsored by Eley, the ammunition manufacturers. The first round is shot at one's home range and the results sent to the organisers. The top two hundred in each class (there are five classes with about a thousand in each class) then go through to the second round.

Having been in the top two hundred in the first round, the second round is shot, again at one's home range, and the cards forwarded to the organisers. Of the two hundred now in each class, the top twenty scorers qualify to shoot in the final at Bisley.

Barry did so and came second overall — an excellent and well-deserved result as Barry's marksmanship has improved consistently over a considerable period. Congratulations. Mine's a pint!

This month (September 20th) sees us visiting Northampton for our annual shoot against Barclaycard. Last year we were well beaten, but this year we intend to take our revenge. Wish us luck.

None of my meanderings this month, you'll be glad to notice. Pressure of work(ish).

GEOFF DONGWORTH, ext. 655

ACCESS RIFLE CLUB

DISCO

FRIDAY, SEPTEMBER 11th, 1981

FROM 8 P.M. TO MIDNIGHT

The first Disco at your

**NEW SOCIAL CLUB PREMISES
123 EASTERN AVENUE**

TICKETS 75p EACH from the Social Club or

J. Stack (ext. 329) — D. Quinn (ext. 550)

BADMINTON CLUB

The newly formed Access Badminton Club are still seeking premises. Anyone who feels they can be of help is asked to contact Yvonne Clements on ext. 418.

To all those on the membership list, if you feel you would like to be coached in the finer arts of badminton, please fill in the attached slip.

BADMINTON COACHING

I am interested in badminton coaching

Name

Section

Extension

CRICKET CLUB

Hugh Jones Trophy (single-wicket competition). On Sunday, August 23rd, thirteen members took part in a most enjoyable single-wicket competition for the Hugh Jones Trophy.

The players were divided into four groups and the winners of each group went through to the semi-finals. After nearly four hours play those to qualify from the groups were Andy Nunn, Steve Smyth, Ken Ross and Steve Madley.

The draw for the semi-finals paired Andy Nunn against Steve Madley and Steve Smyth against Ken Ross.

Although neither match was high-scoring, each was keenly fought with the eventual winners being Andy and Ken.

In the final Ken Ross batted first and scored 22 before being caught.

Andy started off very well but then played over a full-length ball and was bowled for 11, so Ken took the trophy.

This is the second occasion Ken has won the trophy in the three years it has been played.

A XI v Hockley. An exciting win for Access with Don Brooke hitting the winning runs off the penultimate ball.

Chasing Hockley's 94—6 (Dick Gilbert 3—28), Access' total of 95—6 was reached

thanks to a magnificent 53 from Graham Winn and 14 from Andy Nunn.

A XI v M.o.D. In an exciting game Access went down by three runs.

M.o.D. scored 100—4 (Dick Gilbert 2—20), while Access lost seven wickets in making 97 (Dick Gilbert 20, Tim Lewis 17, Andy Nunn 17, Roger Evans 13 and Graham Winn 12).

A XI v Barclays. Making his first appearance in the Evening League, Reg Day claimed 4—20 as Barclays scored 93, but with a much-weakened side Access could reach only 37—9 (John Fessey 10, Don Brooke 10).

A XI v Chargecrest. League leaders Chargecrest reached 118—7 (Bill Garner 4—39). Access, in fading light, mustered 73—6 to lose by 45 runs (Graham Winn 24, Don Brooke 14, Geoff Wiggins 11 not out).

A XI v Fairfax. Dropped catches were the reason Fairfax reached 78—7, with Reg Day (2—16) suffering most.

Access scored 65—7, 13 runs short of victory, Don Brooke (19 not out) and Dick Gilbert (15) reaching double figures.

A XI v Chargecrest. Batting first, Access made 66—9 (Graham Winn 15, Nigel Hearth 14).

Chargecrest had little difficulty in scoring 67—4 for victory (Dave Boitout 2—17).

A XI v Customs. An excellent win for Access against Customs.

Access scored 103—5 thanks to Steve Madley (34 not out), John Fessey 16, Dick Gilbert 12). Customs finished five runs short on 98—5.

A XI v Rochford. Rochford batted first in semi-darkness and scored 89—9 (Dave Boitout 2—28, Dick Gilbert 2—30).

Access, in total darkness, scored 58—5 ("Cats-eyes" Madley 20 not out). If John Fessey (13) had not been unluckily run out the result may have been closer.

B XI v Shoeburyness on June 17th.—lost by eight wickets. We started briskly, with Frost dominating, but unfortunately lost two quick wickets — a lucky 25 from Boitout and a quite magnificent three from the Hunk.

Following this things became extremely boring as Madley, Taylor and Seaton all scored runs, and our innings closed at 116—3.

Due to a clerical error the skipper forgot to contact the team's star bowler and consequently Shoebury won with two balls to spare. The renegade, George Graham, scored an excellent 52.

B IV v Midland B on July 1st—won by seven wickets. At last another win. Excellent bowling by Ken Ross and new signing Steve Jackson enabled us to restrict Midland to a paltry 49—8.

After being reduced to 10—3, some dreadful batting by Madley and Seaton saw us home without further loss. Thanks to Rookie for making a difficult catch look easy.

B XI v Midland B on July 8th—won by 13 runs. In the return match at Belfairs we elected to bat first and scored runs at a reasonable rate in spite of the presence of Dick Lewis throughout. He finished on 41 not out, well supported by Mick Taylor on 28 not out.

Midland were never in the hunt (Ross 1—16, Jackson 3—21, Smyth 4—24), largely due to the efforts of Saff Walden, who held on to three catches, thus losing the bar of soap.

B XI v M.o.D. B on July 14th—lost by

52 runs. Back to reality. Under the captaincy of that inept Tyke Mallinson, we were comfortably demolished by a strong M.o.D. side.

They accumulated 109—5, with Smyth and Jackson taking two wickets apiece, while we could manage only 57—8, the highlight being Frost's impersonation of a whale during a run-out incident.

B XI v Berec on July 28th—won by nine wickets. The previously unbeaten league leaders were given a sound thrashing due to the introduction of Thos. Wethered's bitter at the Ekco bar.

As Jon O'Brien had to rush off for football training and a new ball was provided, the opposition were inserted and started well. However, superb field placings enabled us to take three vital catches and restrict Berec to 66—6 (Boitout 3—17, O'Brien 1—21).

Our innings is not worth a mention, but Madley made 49 not out and was aided by Mallinson's stout 12 in an opening partnership of 55.

Current league record: won four, lost five. Prospects: nil!

A reasonable GIFT !

Hand-engraved Wineglass

with initials or name, plus some other decoration such as flowers, animals, date, etc.

WINEGLASS £1.50
(including glass)

Half-pint and pint
TANKARD . . £1.25 £1.50

Green-stemmed
GOBLET £1.75

OTHER GLASSES AVAILABLE AT
SIMILAR COMPETITIVE PRICES

Weddings, Birthdays, Anniversaries a
speciality

Mrs. D. Stevenson SOUTHEND 62117

Shampers

The newly opened SHAMPERS organisation
(HAIR AND SKIN CONSULTANTS) are pleased
to offer a

**PERMANENT 10% DISCOUNT on
ALL HAIRDRESSING SERVICES !**

Please call in for a FREE CONSULTATION

★ **WE CARE ABOUT HAIR**

★ **WE CARE ABOUT YOU**

220-221 Churchill Square
Victoria Circus, Southend-on-Sea

Telephone: Southend (0702) 66990/66999

Prestige Cars

DISCOUNT

**FOR
ACCESS
SOCIAL CLUB
MEMBERS**

**for that SPECIAL
journey**

Beautiful Caribbean blue **ROLLS BENTLEY**
and **S MERCEDES** available for weddings
and those special journeys.

LICENSED CARS AND DRIVERS

Tel: SOUTHEND 47630

B/A and C/P

anglian
WINDOWS

THE NATIONAL COMPANY WITH THE LOCAL SERVICE

24 SOUTHCHURCH ROAD
SOUTHEND-ON-SEA
Tel: SOUTHEND 614713
or SOUTHEND 610378

**5%
DISCOUNT
TO
SOCIAL CLUB
MEMBERS**



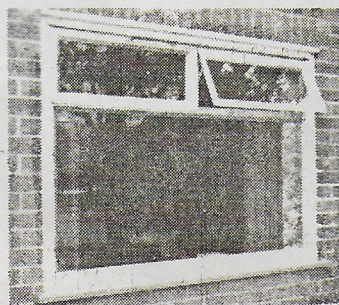
RESIDENTIAL DOOR

ANGLIAN GUARANTEE

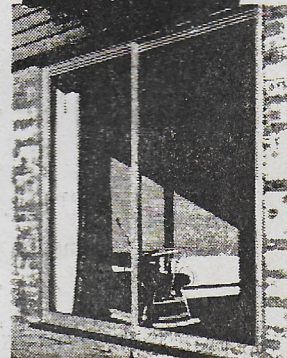
Anglian give a 10-year guarantee
which covers any defective
materials and workmanship.

FREE ESTIMATES

An Anglian consultant will call to see you by
appointment in order to discuss your heat loss and
insulation problems, advise you, and give you an
estimate for Anglian Units without obligation.



REPLACEMENT WINDOW



PATIO DOOR

FINANCE

Home Improvement Loans
easily arranged

Secondary D/Glazing

22858

ACCESS SPORTS AND SOCIAL CLUB



123 EASTERN AVENUE, SOUTHEND-ON-SEA SS2 4DX
Telephone: Southend (0702) 613434

Internal Extensions:
S. J. CURTIS (Manager) 659
A. PULLMAN (Club Steward) 377
C. KELLY (Caterer) 377



OPENS TUESDAY, SEPTEMBER 1st, 1981

Official opening Thursday September 17th

5.30 p.m. to 7.30 p.m.

Trumans the Brewers



WISH ACCESS SPORTS & SOCIAL CLUB
EVERY SUCCESS WITH THEIR NEW
CLUBHOUSE



Suppliers of Carlsberg and Holsten Lagers

a fine history

a rare quality

Brewers since 1799

GREENE KING



A message from your Chairman

"It is very very nice — the colour scheme is lovely . . ." — quote by a lady member of staff, Operations Centre

"An absolutely wonderful job. I was impressed . . ." — quote by a manager, Chartwell House

"I think it is a fantastic clubhouse. I am very pleased with it and the facilities are very good . . ." — lady bank representative on the Sports Club Committee.

YOU WOULD THINK the above remarks, which were just some of the views of the club members who have seen the new clubhouse, would be sufficient encouragement.

But the quote of them all must be that from the Chairman of the Licensing Magistrates at Southend Court, who after hearing the Sports Club application for a licence, said:

"On behalf of my fellow Justices I wish to put on record our congratulations to Access on the design, interior finish and safety precautions at the new premises."

Having had the opportunity to see the drawings become a reality I can but admire the work of Dennis Bourn, Paul Rudd, Tony Merry and the other members of the property department who have produced such an elegant and well appointed clubhouse.

Our grateful thanks must also go to the Board of Directors for making the funds available to make the building a possibility.

The Company have provided us with an absolutely first-class building with excel-

lent fittings and fixtures and a club of which I am sure you will be proud to be a member and where you will be very keen to enjoy the facilities.

As I write this report the final touches are being made and the important details, such as the beer supplies, are arriving, so all looks set fair for the first pint to be pulled on September 1st.

The television has been purchased with the money raised by Peter Chandler, assisted by the ladies and gentlemen in the comic football match.

I hope you will admire the nice cane furniture for use in the sun lounge, this having been purchased with the money raised on the recent Fun Day.

You may remember the excellent idea of a sponsored walk arranged by Midland Bank. The money donated as a result of this walk has been used to purchase a deep-freeze which although it will not be on view to everyone will be an invaluable asset to our catering staff.

A donation in excess of £74 has been received from the table tennis section, which is to be used to purchase a cover for the carpet when the hall is in use for indoor games.

Tony Pullman has assured me he will be there at noon on September 1st to draw the first pint. I will be there ready to drink it. All we are short of is a volunteer to pay for it!

However, if you miss this great opportunity you can come in and take a look and then come back again and again.

GORDON OAKLEY



SUN LOUNGE AND CHILDREN'S AREA

LOUNGE BAR AND CATERING AREA





THE MEMBERS' BAR



Notes from the Office

AT LAST the great day is upon us. The furniture is in, the carpets are fitted, the licence has been granted, and all fixtures and fittings have been completed.

Staffing is complete and all we need now is you the members.

We open our doors for business at noon on Tuesday, September 1st, and we would like you all to pay us a visit, although not all at once, please.

Licensing hours will be as follows: lunchtimes noon to 2 p.m. daily; evenings 5.30 to 10.30 Monday to Thursday; 5.30 to 11.0 Friday and Saturday; 7.0 to 10.30 Sunday.

Catering will be available as follows: Monday to Friday lunchtimes—hot and cold meals plus bar snacks; Monday to Friday evenings—bar snacks; weekends—bar snacks.

At the new clubhouse we have a very nice sun lounge which although it is not intended solely for children will be the one area where you will be able to take children.

No children will be allowed into the bars during opening hours except in the main lounge for sectional activities when the bar in that area will be closed.

As you all know, for the past two years many departments, sections and members have contributed towards our fund-raising efforts.

Our original target was £20,000 and although we have not reached our target we have managed to raise a considerable amount of money.

Gordon Oakley mentions in his Chairman's article the tremendous efforts made by various people and I would just like

to tell you what the money raised by you in ways such as the 150 Club, grand Derby draw, pontoon jars, plus the accumulated club funds, has been spent on.

We have purchased such items as glassware, crockery, glass-cleaning machines, cash registers, cellar-cleaning equipment, a winch-and-pulley system for real ales, the sound system, ice-making machine and last, but not least, the room divider for the lounge which will enable us to have more than one event taking place at the same time.

New membership categories will not take effect until January 1st at which time the rules relating to membership in the new constitution will come into being.

Every member will have to reapply for membership and it is hoped application forms will be distributed to every member of staff during December.

The sections will commence their activities at the clubhouse as from September 1st which will mean that the lounge will be in use Mondays to Thursdays from 5.30 p.m. to 10.30 p.m.

Friday, Saturday and Sunday nights are reserved for functions such as dinner dances, discos, hoedowns, etc., and already we have a number of bookings, the first one being the Rifle Club's disco on Friday, September 11th.

The finals of the national bat and trap competition for the David Russell Trophy will take place on Saturday, September 12th, and Access Stage Players are staging a production on Friday, Saturday and Sunday, October 2nd, 3rd and 4th.

The official opening will take place on Thursday, September 17th, with the Chairman of the Joint Credit Card Company, Mr. Esam, performing the opening ceremony.

As much as we would obviously have liked all members to witness this historic event, I'm sure you will appreciate this is not possible.

Two hundred attendees have been invited and your committee have ensured that all sections and departments are represented together with the present and past general committee members who have all worked so hard to make this whole venture possible.

To enable us to carry out the ceremony the clubhouse will be closed to members on September 17th from 5.30 p.m. to 7.30 p.m. after which time we will revert to normal operating.

The success of the club depends on you, the members, as much as it does on the committee and sections.

Please make use of the club and help us to make Access Sports and Social Club what we know it can be — the best club in Essex.

S. J. CURTIS, Manager

GOODYEAR PRINTERS

CONGRATULATE
THE SPORTS & SOCIAL CLUB
ON THE OPENING OF THEIR
NEW CLUBHOUSE
AND WISH THEM
EVERY SUCCESS

70 SOUTHCHURCH AVENUE, SOUTHEND

Telephone: Southend (0702) 613289



alpha
electrical
services
limited

SUPPLIERS OF THE ELECTRICAL INSTALLATIONS,
SOUND AND SECURITY SYSTEMS
AND CATERING EQUIPMENT

would like to congratulate

THE JOINT CREDIT CARD COMPANY LIMITED

on the opening of their

SPORTS AND SOCIAL CLUB



940/942 LONDON ROAD, LEIGH-ON-SEA, ESSEX, SS9 3NF

Tel.: Southend 712540 and 715121/2

OFFICE NEWS

DISCOUNTS

Scientific and Technical Ltd., Progress Road Trading Estate, Leigh-on-Sea (Southend 529611), are offering two-and-a-half per cent discount on your first purchase. You will then be issued with a privilege customer discount card entitling you to up to ten per cent off any future purchase.

Prestige Cars, 226 Carlingford Drive, Westcliff-on-Sea (Southend 47630).—Ten per cent discount to club members. Rolls Bentley, S Mercedes available for weddings, etc.

Shampers, 220-221 Churchill Square, Victoria Circus, Southend-on-Sea (Southend 66990/66999), hair and skin consultants.—Ten per cent discount to all members.

B.W.C. Concrete Products, Eastern Industrial Estate, South Woodham Ferrers, Chelmsford (0245 322487).—Ten per cent discount to all members on items such as paving slabs, fencing, ballast and cement.

MONTHLY DRAW

Winner of the £50 first prize in the July draw was D. White from NatWest.

Full result as follows: 1 (£50), 1529, D. White (NatWest); 2 (£25), 1894, D. Tooher (L.C.C.); 3 (£10), 1192, P. Powell (Fraud); 4 (£5), 2466, N. Leigh (Video); 5 (£5), 2951, K. Kimberley (Security).

This draw resulted in a net profit for club funds of £62.40.

Prizes for the September draw will be all cash and the draw will take place on Thursday, September 24th, at the new clubhouse.

COME ON — VOLUNTEER !

Southend's Lifstan Boys' Club urgently need additional voluntary leadership. The club meets one night a week from 7.30 to 10.30 and requires people with enthusiasm but not necessarily any experience.

However, if you have experience of and skills such as football, table tennis, art, etc., then this would be invaluable to the boys.

Currently there is a membership of fifty, but obviously there is great potential if suitable leaders can be found.

If you think you can help or would like more information please contact the Essex Association of Boys' Clubs on Chelmsford 64783).

CONGRATULATIONS

We offer our congratulations to Caryn Smith (Punch Room) and Brian Smith (D.P.S.S.) on the birth of a son on August 16th.

JAMES LAST

Have you paid ? Now due.

WEIZE BEER FESTIVAL

Do you still owe money ? Please pay immediately if you do.

WAITING LISTS FOR SHOWS

The following shows now have waiting lists running: "Barnum"—September 19th and 25th; "The Sound of Music"—October 24th and 31st; Horse Show—October 8th; James Last—November 19th and December 1st.

GLORIOUS TWELFTH

Not only was it the Glorious Twelfth for grouse shooters but also the glorious twelfth for forty mums and children who went to Thorp Theme Park for the day.

The sun shone brilliantly all day as the children explored the four hundred acres, discovering King Arthur's Court, the Viking galley and the Roman baths (great for cooling-off in) together with many other figures from the past.

To add to the fun there was go-karting, roller skating, bumper boats, pleasure boats and many other attractions.

The children had a terrific day and all said they'd like to return.

The parents ? They all looked exhausted but agreed it had been a great day out for the children.



HOLIDAY PROMOTIONS

J&M Holiday Promotions, 102 High Street, Southend-on-Sea, Essex SS1 1JN. Tel. (0702) 613065.

WE ARE CURRENTLY PROMOTING

Coach Group Holidays

FROM

SOUTHEND

Cornwall

FOUR-DAY LONG WEEKENDS
or SEVEN DAYS

in September 1981 to
March, 1982

SPORTING HOLIDAYS
to

Wine Tasting Holland

OCTOBER 1981 to
MARCH 1982

LONG WEEKEND BREAKS
Stay in HOLLAND — visit
GERMANY

Full Board Hotel Accommodation
SEPTEMBER 3rd 1981
£66

Full Board

COACH TOURS
TO GERMANY

£70

Visit the
ISLES OF SCILLY
by helicopter
from Penzance
extra £26

FOUR DAYS
£56

SEVEN DAY

Half Board
Hotel
£95

Switzerland

SKI HOLIDAYS

TEN DAYS COACH & FERRY

Hotel Accommodation and Half Board
Ski Hire and pass inclusive

£171



For further details:
Tel: Southend 613065/6

TRIP TO SEE WEDDING GIFTS

Here I am once again after leaving Lesley to write "my page" last month. I wish I could say thanks, but some of her remarks did give me the hump!

Joking apart, I did have a lovely holiday in Egypt, which is a super country to visit especially if, like me, you are interested in history. Then, of course, it was good to wake up in the morning certain of sunshine!

Obviously my good reports must have reached further than I thought, as it was visited during a certain honeymoon. It was a pity the "couple" didn't get to see the pyramids, especially at the Sound and Light, as this was one of the most beautiful events I have ever witnessed.

* * *

On August 9th two coaches travelled to St. James' Palace to view some of the presents given to the Prince and Princess of Wales on the occasion of their marriage.

We left Access at 9 a.m. and arrived in the Mall at 10.30. The queue was only about twenty-five yards long so we didn't have long to wait when the doors opened at noon.

While we were queueing, the changing of the guards ceremony was taking place so several people walked down to watch.

In addition to the presents it was most interesting to see inside St. James' Palace, which is somewhere I had never visited previously.

The presents — there are a thousand of them — are from a large variety of people and the various organisations with which the couple are associated.

There are lots of pictures from children which really are cute. But I was surprised to see a bride and groom made of shortbread, decorated with smarties, dolly mixtures and jelly babies!

Of course some of the more eye-catching gifts have been shown in the newspapers, but they really have to be seen to be believed.

One member of a Middle Eastern royal family must have had so much trouble in choosing what to send that he solved the problem by sending about a dozen!

The one thing most people took a fancy to was a model of an Arab boat made of

gold. It was about twenty inches long by twenty inches high. The red-and-white flag was made of diamonds and rubies and the sides were set with a row of pearls. It was complete with sails, rigging and ropes — all in gold.

There was some lovely jewellery including one piece set in diamonds and sapphires which was amazing.

My personal favourites were a lovely lacquer box set with a hydrangea in mother-of-pearl, from the Crown Prince and Princess of Japan, some beautifully made cushions in lace, satin and silk, and a poem about "man's best friend" — the dog.

After the presents came the close-up of the dress, which has a lot more work in it than was visible on television and which I liked very much. Also on show were the shoes and a matching parasol not seen on the day.

One of the bridesmaid's dresses and a page's uniform were also on show.

We have arranged another trip to see the presents on Sunday, September 13th, so let me know as soon as possible if you want to come along.

All proceeds from the exhibition are to go to charities connected with the disabled and looking at the length of the queue when we came out a lot of people will be benefiting from this very interesting display.

* * *

On Saturday, September 12th, the day before the trip to see the presents, we go to Broadlands and Winchester. There are still a few places available at £3.75 plus your entrance fee.

* * *

Changing the subject completely, we have obtained tickets for the Ultravox concert at the Odeon, Hammersmith, on October 16th. Stall seats and coach £7. Contact me on ext. 4198 to book.

* * *

There is a visit planned to Sadler's Wells to see the Royal Ballet on September 17th. Five short ballets are being performed including "Façade" (see posters).

**A Free
House and
Restaurant**



15 per cent cash discount

on all meals served in our Grill Restaurant on the first floor, mornings and evenings, to all bona fide Access staff (proof of identity essential) until the end of September, 1981.

Christmas party bookings

Our Christmas menus are now back from the printers and are available on request (telephone or call in). To avoid disappointment early booking is most advisable as we are already taking a lot of repeat bookings from parties who joined in our Christmas lunches and dinners from last year.

Make friends
with Sophie —
but not our
piranhas

Owners: MAUREEN & PETER

**LOWER GROUND FLOOR
CHARTWELL SQUARE
VICTORIA CIRCUS, SOUTHEND-ON-SEA**

Telephone: Southend (0702) 616914

On October 23rd the Kabuki Theatre of Japan is appearing at Sadler's Wells and I hope to get a coach party to see this exciting and colourful spectacle.

* * *

Bookings for the Christmas shopping trips to Milton Keynes (November 21st) £3 and Brent Cross (November 28th) £2 are going quite well, so let me know as soon as possible if you want to book seats.

* * *

We are still collecting Pedigree Chum labels, so please keep them coming and help us to help Guide Dogs for the Blind. September 18th will be the last day.

* * *

On Saturday, December 7th, we will be having an old-time music hall at the new clubhouse. Dress in period costume for both ladies and their escorts is required.

We hope everyone will enter into the spirit of things and, of course, if you have any ideas please let me know.

* * *

Two main visits are planned abroad for 1982. First is the famous Floriade near Amsterdam over the Easter Bank Holiday, followed later by an extended trip to Paris from May 31st until Friday, June 4th.

Both trips are getting so booked we will soon be on our second coaches, so if you are interested, book early to avoid disappointment.

Finally, to dispel a myth. Although our title is the Access Ladies' Guild, we usually have quite a few chaps on almost all of our trips, so if any of our coach trips to theatre, ballet, pop concerts or excursions abroad interest you you are most welcome to join us.

Likewise there are lots of ladies on their own who after a number of trips with us find they have made a lot more friends.

STOP PRESS

Barry Manilow concert dates have been confirmed. Price of tickets only for the Royal Albert Hall is £15 each.

If we are unable to get tickets for any of these concerts then on January 26th and 27th there are concerts at the Brighton Centre and we will try for them. The only problem will be that the journey to Brighton is two-and-a-half hours, so it would mean leaving at 5 p.m. sharp.

If we do get tickets they will be allocated at two per person strictly in the order in which I received your request. If you only want tickets for the Royal Albert Hall please let me know.

NO MORE REQUESTS FOR TICKETS, PLEASE!

* * *

The Festival of Carols at the Royal Albert Hall will be on December 12th; prices not available at the time of going to press.

Contact me as soon as possible if you wish to reserve seats.

GRACE

Perrings

**SOUTHEND'S
LARGEST QUALITY
FURNITURE STORE**

Furnishing for today's lifestyles

3 floors with over 20,000 sq. ft. of showroom — The finest display of quality furniture in the town.

**G-PLAN . ERCOL . UPHOLSTERY .
BEDDING AND CARPET SPECIALISTS**

29-31 London Road, Southend. Tel. 47888/9

USE YOUR CREDIT CARD



or hire purchase terms available

ESSEX STORES ALSO AT
HARLOW & GRAYS

Access Sports & Social Club

Monthly Draw

SEPTEMBER 1981

Cash Bonanza!

1st prize

£50

2nd prize

£25

3rd prize

£10

4th prize

£5

5th prize

£5

● TICKETS
AVAILABLE FROM:

D. Mallinson
Miss J. Smith
Miss J. Marett
Veronica Blake
Mrs. G. Richardson
Mrs. L. Matthews
Miss S. Rice
Mrs. J. Frogley
M. Bennett
Mrs. L. Croysdill
Miss A. Pearson
C. Goodall
Mrs. D. Moore
Mrs. J. Ayers
G. Woods
Mrs. C. Simpson
Miss C. Bennett
P. Carpenter
F. Ford
E. Chittock
R. Chittock
A. Ellison
Mrs. R. Hume
Eileen Harper
Jean Kentish
Mrs. J. Hutton
H. Fenwick
Sarah Golding
R. Shead
Mrs. H. Riseley

Social Club Office and
the Bar

RULES

1. Tickets will be available from the first Monday of each month.
2. No tickets will be sold after 14.30 on the day of the draw.
3. Tickets are priced 5p each and are available from the Social Club office, bar and all duly appointed area representatives.
4. Sports and Social Club members only may take part in the draw.
5. The draw will take place at 17.30 hours on the last Thursday in each month.
6. Prize lists and winning numbers will be displayed at the bar and on all notice boards, and in "Scan".
7. Any prize not claimed by the penultimate Friday of the following month will be forfeit and will be included in the following month's draw.
8. All prizes must be claimed from the Social Club office. Hours of opening 09.00 to 13.00 and 14.00 to 17.00.
9. The rules of this draw are final and can only be changed by the Social Club Committee.

Cartoon competition

Winner of the August competition was Bill Highstead (Security), whose entry was as follows:

"The assistant said you bought one just like it for your wife."

Entries for the September competition should reach the Social Club office by not later than Friday, September 18th.

As usual, the prize for the winning entry will be a bottle of spirit of the winner's choice.



Get to know . . . P.V.C. WINDOWS & DOORS



CLASSICAL opens new windows on the world. The very best p.v.c. windows and doors in permanent white, requiring no maintenance other than cleaning. Direct from our local factory to your home.

- ★ DOUBLE-GLAZED WITH UP TO 24mm. SEALED UNITS
- ★ UNIQUE TILT-AND-TURN WINDOWS
- ★ NO PAINTING REQUIRED
- ★ GOOD VENTILATION
- ★ NEXT-TO-NO HEAT LOSS
- ★ SUPERIOR SOUND INSULATION
- ★ NO TIMBER FRAME REQUIRED (FITTED DIRECT TO WALL)
- ★ OUTSIDE CLEANED FROM INSIDE
- ★ COMPLETE SECURITY EVEN WHEN OPEN FOR VENTILATION
- ★ COSTS COMPARABLE WITH ALUMINIUM SYSTEMS
- ★ PERMANENT CLEAN WHITE — WILL NEVER FADE
- ★ GEORGIAN AND LEADED LIGHTS
- ★ TEN-YEAR GUARANTEE
- ★ FREE ADVICE ON CONDENSATION PROBLEMS
- ★ FREE ESTIMATES
- ★ NO SUB-CONTRACTORS
- ★ **AND NOW—ADDITIONAL DISCOUNT FOR ACCESS EMPLOYEES !**

Get the full story on p.v.c. windows and doors at:

Classical Windows

1184 LONDON ROAD, LEIGH-ON-SEA Tel: Southend 713539
(near Westleigh Schools) OPEN MONDAY TO SATURDAY 9 A.M. TO 5.30 P.M.

Manufacturer's Discount: 10% OFF all orders or 20% OFF WHOLE HOUSE

Small Advertisements

MISCELLANEOUS

PHOENIX Country Band for good country and western music, available for dances, clubs, shows, festivals, hoedowns and square dances, etc. All enquiries phone Pamela, South Benfleet 55372.

NEW Wahine Cattery and Kennels.—Heated comf. accom.; collection and delivery if req.; first-class alsatian and sheltie puppies avail., and trained alsatian guard dogs. Phone ext. 289 or 203961.

DAIMLER limousine available for weddings or chauffeur hire; **phnry** available; **reas. rates.** Phone 587646 after 6 p.m.

BABY budgerigars for sale. Contact Mrs. Merritt on ext. 4378 or phone after 7 p.m. Chelmsford 320612.

SKIP hire.—6 cu. yd. skips avail.; 10 per cent discount for Access Social Club members. Phone Neilstar Transport, Southend 49005.

THUNDERSLEY.—1972-built mid-terrace house; 3 good bedrooms (fitted wardrobes), 25ft. lounge/diner, fitted kitchen; good sl e garden, garage; close to schools, shops, bus route. £23,000. Phone ext. 4330 or Rayleigh 779982 evngs.

SOUND home movie kit, Bell & Howell camera, 1239 XL macro wide-angle and tele s.f., 18 24 36 speed, fade-out button, and Eumig RS3000 projector, plus films; £250 o.n.o. Contact 101 Southchurch Av., Southend.

WELL-maintained end-terr. house; lounge, dining room, well-fitted pine-clad kitchen, 2 double bedrooms, large bathroom/w.c.; woodworm, dampcourse guarantees, rewired, replumbed; long garden; all carpets to stay. £18,950. Contact Mrs. Saunders (ext. 4324) or call 45 North Av., Southend (evngs.).

FOR sale holiday chalet on secluded park overlooking Bodmin Moor, Cornwall; fully furn., 2 bedrooms, bathroom aid toilet; excellent cond.; long lease. £7,650 o.n.o. Phone: South Benfleet 57490.

SPAIN.—Self-catering accom. In bungalows and villas to sleep 2 to 8 persons, ideal sea or golf holidays; from £50 p.w. Phone Southend 203850. Vacancies for October.

TAILORING alterations and repairs expertly carried out; hems lengthened and shortened, zips renewed, etc. J. Freeman, 111 Hampton Gdns., Prittlewell (phone Southend 41515).

PRINTING.—Headed notepaper, dance tickets, etc.; plenty of samples to choose from. Contact Alan Risdon, Essex House (ext. 4009).

MALTA.—Self-catering holiday aparts., 1 bedroom to 4 bedrooms; save up to £50 per person. For details contact J. Cauchi (Dispatch), ext. 480 or evngs. 333401.

CLOWN.—Supertramp's magical show for all children's parties; anywhere, any time. Phone Southend 217153.

GOLFERS.—Golf balls at discount prices from £5 a dozen; golf gloves £2.25 each. R. Simpson, ext. 8232.

PORTREATH, Cornwall.—Luxury s.c. flat, sleeps 2/4, secluded spot in wooded valley near surfing beach, colour television, good parking space. Contact Portreath (0209) 842191 evngs.

DISCO.—Mobile disco and light show, all occasions. Southend 202784.

OUTSIDE catering in your home or in a hall of your choice — birthday parties, weddings, etc.; no function too small; food left or waitress service. Phone Southend 219452.

FLAT req. to rent for young couple, furn. or unfurn., in Southend area. Please contact Jill, ext. 364.

J. L. KEANE, carpet laying specialist.—Carpets lifted and readapted; new carpets of all makes supplied. Contact 55 Eastwoodbury Lane, Southend (phone 548988).

DAUNTLESS cabin cruiser, inboard petrol engine, overhauled, rewired, cooker, mooring, Leigh; £1,900 for quick sale. Contact Mr. Binnie, Shoeburyness 6378.

WEDDING dress for sale, white with matching veil and headdress, cost new well over £100, size 12; for quick sale, £30 for them all. Phone Southend 87361 evngs.

CORNERWAYS Guest House (2 mins. pier, beach, shops, buses, rail).—Bed/breakfast and/or evng. meal. 12 Kensington Road (London Road South), Lowestoft. Tel: Mrs. Geering, Lowestoft 67821.

JUDO suit, size 170, as new; £10. J. Frieland, Shoeburyness 2603.

SOUTHEND United F.C. req. gate staff for the coming season: £4 per game. Anyone interested contact Eric Beatwell, Essex House (ext. 4126).

WETSUIT, Lillywhite's, de luxe brand, new, large, cost new £140; offers. Contact Mrs. Butler, Rayleigh 770540 Monday-Wednesday after 3.30 p.m.; Thursday-Sunday all day.

THREE-bedroom semi-det. house, large lounge, kitchen/diner, bathroom with sep. shower unit, coloured bathroom suite, gas central heating, garage. £26,000. Phone 48424.

FREEZER, Electrolux, 14 cu. ft., excellent working order, scratched lid; £25. John Carver, ext. 285 or 526046.

URGENT.—Girl student aged 19 reqs. accomm. in Westcliff or Southend area, around £30£40 per month. Contact Mrs. Daniels, South Benfleet 58569.

AKAI 400DS reel-to-reel, s.o.s., etc.; £100. Helen, Switchboard, or phone Canewdon 577.

WELL-maintained mid-terr. 3-bedroom house, Westcliff area; 2 recep., kitchen, spacious bathroom, gas central heating, rewired, guarantees for woodworm, dampcourse, new roof; all carpets, cooker included. £21,500. Contact Mrs. Lamb, Southend 338591.

REEL-to-reel tapes, used but blank.—7 x 1,200 feet, £1 each; 4 x 1,800 feet, £1.50 each; 5 x 2,400 feet, £2 each; or £20 the lot o.n.o. Mrs. M. Powell, ext. 4213 or Rayleigh 777934.

TWO private elec. meters, wire, fuse boxes and keys; £20 each. Phone 62145 after 6 p.m. (not Tuesday).

KNITMASTER knitting machine with tools, wool winder and bones; £50. Phone 62145 after 6 p.m. (not Tuesday).

GOLD (9-ct.) 4-gate bracelet, unwanted gift, never worn, £70; 9-ct. gold bar and diamond earrings, as new, worn only 3 times, £45; 9-ct. gold large hooped sleeper earrings, £5. Contact Lydia, Chartwell House, ext. 8170.

CARAVAN, £1,700. 1979 Musketeer Super, 4-berth, double-glazed, heater, fully insulated, carpet, large fridge, elec. pump, gas bottle, locker. Contact W. Cope, ext. 431.

HOUSE, Rayleigh.—Modern mid-terr. house in quiet walkway; lounge/diner, fitted kitchen, 3 bedrooms, full gas central heating, det. garage. Phone Rayleigh 779169.

FLAT or similar, furn. or unfurn., req. to rent by young professional man working for Access. Contact P. Slade, Southend 615284, after 5 p.m.

STADIUM helmet, Project 7, size 1, blue, hardly worn. Offers, please, to Gwen, ext. 471, or Southend 201578 evngs.

STEREO radiogram in mahogany and walnut cabinet, partly working, would do for conversion to drinks cabinet; free to anyone who can collect. Phone Southend 354776.

HOLIDAY farmhouse, mid-Devon, Tiverton, excellent position for touring Devon and Cornwall; bed and breakfast £6.50, dinner extra £2.50. For more information contact Betty Smith (New Accounts), ext. 550, or write direct to Mr. and Mrs. Russell, Higher North Combe Farmhouse, Rackenford, Tiverton, Devon (phone Rackenfield 267).

PRIVATE hire taxi service to airports, local area and any distance; quotes given. Phone Southend 219612 or Shoebury 5646.

DANCEMASTER Mobile Discotheque.—Looking for a great disco at reas. rates? Well look no further. Phone Dave on Southend 611861 for details.

HOSTESS Carpet Care "dry"-cleaning service for carpets. For free estimates phone Canvey Island 697332.

BUILDERS & DECORATORS

J. & R. Building Contractors.—Groundwork, brickwork, carpentry, extensions and conversions, all building work undertaken. Rayleigh 775905.

FULLY qualified electrician (City & Guilds, plus 11 years Eastern Electricity Board service).—Complete rewires, points, cooker installation, etc.; reas. prices for first-class work; estimates free. Phone Southend 616707 or 610597.

PAINTING outside of house?—Metal tower, deliver and collect Southend area; £10 p.w. 529134.

TILING walls and floors; free estimates. Phone 330039 after 7 p.m.

ARMSTRONG & York, Roofing Contractors.—New roofs and repairs; estimates and surveys free of charge; all work guaranteed. Tel: Southend 616999, 32854 or call at 2 Droltwich Av., Southend.

ELECTRICAL.—Be safe! Have your house/bungalow tested free; complete rewires, sockets, cooker points, lights; free estimates. Phone Southend 529134.

S. CHALLENGER, Architectural Design Services.—Building plans prepared and submitted to council. Phone Southend 549297 after 6 p.m.

C. H. Edmunds, Brickwork Specialists, for extensions, garden walls, fireplaces, patios, paths; feature and decorative work undertaken. Phone Southend 202072.

F. ALDERTON, Interior/Exterior Decorator.—General maintenance and repairs; free estimates. Phone Southend 528004.

F. K. Wilson, Builder, Decorator.—Alterations, repairs and extensions; estimates free; no job too small. Phone Southend 547246.

FOR free estimates on all types of home improvements and extensions contact A. & R. Builders, Rayleigh 781350.

PLUMBING, carpentry, interior and exterior painting and decorating, fitted bathrooms and kitchens; all building work undertaken; free estimates. Shoebury 5476.

HEATING boiler services, plumbing and elec. work undertaken, domestic and commercial, by Wilson Heating and Ventilating Services; all work guaranteed. For free estimates phone Southend 714965.

MOTORING

CAR servicing and repairs carried out at your home by exper. mechanic at low-cost prices. Please contact Jill, ext. 364.

DRIVING tuition.—John's School of Motoring; discount for Access Social Club members—£4.50 per hour (norma price £5). Phone Rayleigh 742988 (ask for John) or contact Kim, ext. 584.

1974 mini 850 c.c., year's M.o.T., orange, N regd.; £750 (no offers). Phone B. Foster (Security), ext. 352 or (98) 52939.

ADVERTISEMENTS CONTINUED ON PAGE

DISCOUNTS

Discount cards, letters of introduction and further particulars are available from the Social Club Office, Building 1 (extension 286). It is essential anyone requiring these services contact the Social Club Office first

CAR TYRES & BATTERIES, EXHAUSTS, etc.
LUCAS AUTO SPARES. Minimum 15% discount
Contact Social Club Office

DRIVING TUITION
MANOR SCHOOL OF MOTORING. Tel: Southend 75127
8% — we pay the V.A.T.

CAR INSURANCE
ENSIGN INSURANCE SERVICES (Underwriters to Lloyd's)
FLETT SINCLAIR (Underwriters to Lloyd's)

CAR & LIFE INSURANCE
H. CLARKSON LTD. (Underwriters to Lloyd's)

WATCHMAKERS & JEWELLERS
ANDREWS, 101 Southchurch Road, Southend. Up to 25%
ZALES, Jewellers, 125 High Street, Southend. 10%

HARDWARE, CROCKERY
E. & I., Manners Corner, Manners Way, Southend
15% discount on crockery, hardware, D.I.Y.

CARPETS & FLOOR COVERINGS
DODSON-BULL CARPET CO., 495 London Road, Westcliff

DECORATING SUPPLIES
ANGLIAN DECORATORS' SUPPLIES, Rayleigh Trading Estate
Stadium Way, Benfleet, Essex. Special net terms

FENCING
BRADLEY of HADLEIGH, 95-99 Glendale Gardens,
Leigh-on-Sea. Southend 556375/77845. 5% discount

CLEANERS
EXCLUSIVE CLEANERS, 507 Southchurch Road, Southend
5% reduction on all garments

DOUBLE-GLAZING
ANGLIAN WINDOWS, 24 Southchurch Road, Southend-on-Sea
5% discount
SOUTHERN GLASS, Unit 12e, Temple Farm Industrial Estate,
Sutton Road, Southend-on-Sea
WISHMORE DOUBLE GLAZING LTD.
(contact Graham Thompson, Shoeburyness 2888 or
Pam Thompson, ext. 4010 Essex House).
Generous staff discounts available

WINDSCREEN REPLACEMENTS, ALL GLASS
SMITH GLASS (ESSEX) LTD. 15% discount on glass

SPORTS GOODS
BELL SPORTS, 120 Prince Avenue, Southend. 10%
SOUTHEND SPORTS CENTRE, 633-639 Southchurch Road
Southend. 10%
L. FORGE SPORTS & TRAVEL, Victoria Avenue, Southend
15-17½% on sports goods; 10% on holidays;

HAIRDRESSING
JACQUES OF MAYFAIR, 66 London Road, Southend;
373 Southchurch Road, Southend; 49 Eastbury, Rochford
WESTCLIFF LEISURE CENTRE. 10%
STEVEN HAIRDRESSERS LTD., 22 Clifftown Road, Southend
Tel: Southend 42527. Discount 15% Tues./Wed./Thurs.;
10% Fri./Sat. Proof of employment required
Mon.-Thurs. 10% from £3.50-£7.50; 15% from £7.51-£16.80
Fri. & Sat. 5% overall. Proof of employment required

CAR HIRE
BUDGET RENT-A-CAR, Jessups (Southend-on-Sea) Ltd.,
Milton Road, Westcliff-on-Sea
Save £1 per day or £7 per week
PRESTIGE CARS, 226 Carlingford Drive, Westcliff.
Tel: Southend 47630. 10% discount

ELECTRICAL
Newey & Eyre, 19 The Wheelwrights, Temple Farm Industrial
Estate (off Sutton Road), Southend. Trade price electrical goods.
SCIENTIFIC & TECHNICAL LTD., Progress Road Trading
Estate, Leigh-on-Sea. Southend 529611. 2½% discount on
first purchase entitling you to privilege card giving you
up to 10% off any future purchase

BEAUTY CARE
SHAMPERS, 220-221 Churchill Square, Victoria Circus,
Southend. Tel: Southend 66990/66999. 10% discount

CONCRETE PRODUCTS
B.W.C. CONCRETE PRODUCTS, Eastern Industrial Estate,
South Woodham Ferrers. Tel: Chelmsford (0245) 322487.
10% discount.

FURNITURE

B. & R. BARNES (KITCHENS & BEDROOMS) LTD.
307 London Road, Westcliff
DODSON BULL, 495 London Road, Westcliff. 15-30%
ANTONET FURNISHERS, 104 Hamlet Court Road, Westcliff
15% off all goods

MEN'S WEAR

MISTER BYRITE, 190 High Street, Southend (tel: 63913)
10% discount
PETER BROWN, High Street, Southend. 10%

NEW OR USED CARS PLUS SERVICE & REPAIR DISCOUNTS
S.M.A.C., Priory Crescent, Southend (tel: 48222)

PASSMASTER School of Motoring.—Expert tuition available 7 days a week by A.D.I.; best chance of first-time pass; door-to-door service; competitive prices; trial hour £2, one-hour lessons £5.50, two-hour lessons £9.50. All enquiries and bookings phone Steve on Rayleigh 770360.

1973 Simca 1100GLS, M regd., taxed to September 30th, M.o.T. to January, stereo cassette, new clutch and timing chain; £400. Phone Southend 520414 after 6 p.m.

HILLMAN Avenger 1600GT de luxe saloon, 1974, M regd., 2-door, 46,000 miles, 10 months M.o.T., taxed end September, white with orange stripe, very good cond.; £600. Southend 63685.

FORD Corsair 1700, 1971, reliable; £250. Canvey 695553.
HONDA 70, T regd., 7,000 miles only. Price £175. Phone 529134.

YAMAHA XT250 c.c. 4-stroke trial bike, W regd., mileage approx. 1,500, excellent cond.; £750 o.n.o. Tony, Shoebury 5174 evngs.

FORD Capri 1600GL, regd. November 1977, signal amber, 31,500 miles, stainless steel exhaust (guarantee), 4 new tyres, M.o.T. to November, taxed to end October, V plates, radio/cassette, fitted spotlights; £2,600. Phone 67641.

FORD Escort estate, 1600 G.T., 1973, servo discs, 2000E, stereo, extras, M.o.T., taxed; £700. Helen, Switchboard, or phone Canewdon 577.

VAUXHALL Cavalier 1600, V regd., radio, heated rear window, 25,000 miles, immac. cond. throughout; house purchase forces sale; £2,400. Phone ext. 8119 or Southend 521977.

HONDA Express, T regd., first regd. 11/6/79, only 750 miles from new; £150. Phone Southend 40075.

GSX 250 Suzuki, V regd., 3,500 miles, crashbars, tools and carrier; £650. Phone 616783.

SAVE MONEY!

on
your
house
purchase...



WE WILL PAY £25

TOWARDS YOUR SURVEY FEE ON
COMPLETION OF YOUR PURCHASE
OF A PROPERTY THROUGH US —
ON PRODUCTION OF THIS ADVERT.

W. H. Rollingson & Co.

Estate Agents
14 SOUTH STREET, ROCHFORD
Telephone: Southend 546811



WE ARE SO CONVENIENT FOR ALL YOUR MOTORING REQUIREMENTS

ALL ACCESS STAFF WILL BE OFFERED PREFERENTIAL TERMS FROM THE FOLLOWING DEPARTMENTS



CAR SALES

for your new Leyland car with Supercover — and for top-quality Guaranteed Used Cars (extended warranty available)



PARTS & ACCESSORIES

Large stock of Leyland parts. Other makes supplied through the Unipart scheme.



Servicing by Leycare

GUARANTEED SERVICING

M.o.T. testing. Repairs to any make of car.

Agents for Smiths Industries Servoglide Electric Windows.

PAINT & PANEL

Immediate estimates and high quality repair work from the most modern depot in Southend.

ALL AT

PRIORY CRESCENT, SOUTHEND Tel: Southend 48222

PLUS



CAR HIRE

Large range of the latest cars. Special low winter and weekend rates.

Also "Hire it here, leave it there" scheme — Tel: **SOUTHEND 351351**
B.P. Filling Station, Prince Avenue, Southend nr. Cuckoo Corner

LOW AIR FARES

AIR, RAIL, SEA TICKETS for Business and Pleasure

There are
THOUSANDS and
THOUSANDS and
THOUSANDS
of
GUARANTEED
PRICED HOLIDAYS
for SUMMER and
WINTER

Your Holidays start with

Lipscombe Travel Ltd.

22 QUEENS ROAD
SOUTHEND-ON-SEA
ESSEX

Telephone: Southend 351111



LOW-COST FLIGHTS and HOLIDAYS

ARE AVAILABLE TO MANY
WORLD-WIDE DESTINATIONS

- ★ AUSTRALIA
- ★ AMERICA
- ★ ASIA
- ★ AFRICA
- ★ EUROPE

WE WILL MAKE SURE YOU
PAY THE
LOWEST LEGAL FARE

SAVE MONEY !